



**Peace Dale**  
CONGREGATIONAL CHURCH

# PDCC E-Light Newsletter

261 Columbia Street  
Peace Dale, RI 02879  
(401) 789-7313

April 10, 2025

## SUNDAY WORSHIP 10:00 AM

### Office Hours

Mon, Wed, Thurs 10am-2pm

### Contact Us

SENIOR MINISTER:

THE REV. A. FRED EVENSON  
FRED.E@MAC.COM

ADMINISTRATIVE ASSISTANT:

MARYLOU McMILLAN  
OFFICE@PEACEDALECHURCH.ORG

### Birthdays This Week

Christopher Cote  
Jennifer O'Neill  
Linda Redmond  
Robert Congdon  
Laura Krochin  
Susan LaShomb  
Kristina Barbone  
Jason Wahl

### Visit Our Webpage!

[peacedalechurch.org](http://peacedalechurch.org)

### Follow us on Facebook!

[Facebook.com/PeaceDaleChurch](https://www.facebook.com/PeaceDaleChurch)

### Last Week's E-Light

[peacedalechurch.org/e-li](http://peacedalechurch.org/e-li)

**If every tongue were still, the  
noise would still continue  
The rocks and stones themselves  
would start to sing**

Come worship with us this Palm Sunday as we  
prepare for the week ahead. (Luke 19:29-41)



## Join Us for Easter Week Services

### Palm Sunday, April 13

10 AM – Contemporary Worship

### Good Friday, April 18

6:30 PM service led by this  
year's Confirmands

### Maundy Thursday, April 17

6 PM – Soup & Fellowship  
6:30 PM – Worship Service

### Easter Sunday, April 20

9 AM – Contemporary Worship  
11 AM – Traditional Worship  
*There will be no coffee hour on  
Easter Sunday.*



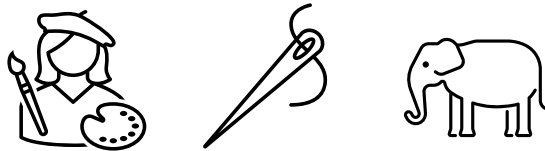
## Worship Flowers

**The flowers for Sunday, April 13 are given to the glory of  
God.**

Flowers are a beautiful way to remember a loved one,  
celebrate a special occasion, or simply give to the glory of  
God. **If you are interested in donating Sanctuary flowers** for April,  
May, or June please contact Roberta Norman at (401) 226-7123.

**IN THIS ISSUE**

Alzheimer’s Caregiver Conference – register 4/12  
 April Flowers Purchases Benefit Dinner Table  
 April Mission of the Month: Egg-a-Day Haiti  
 Celebration of Life for Gail Birchell  
 Church Family Life Events  
 Come Make Music with Us  
 Earth Day Celebration – 4/27  
 Easter Lilies – still accepting orders  
 Easter Week Schedule of Services  
 Eggstravaganza for kids – 4/12  
 Gift Cards with a Kick  
 Join the Green Team  
 No Mow May – Let’s Help Pollinators  
 On the Calendar  
 Once-a-Month Singers  
 PDCC Seeks New Worship Music Director  
 Prayer Matters  
 Share Your Story: Caring for God’s Creation  
 Social Justice in Action  
 Spring Sale – 5/17  
 Tabitha’s Closet – Spring Sales  
 White Elephants – Work Day 4/17  
 Worship Flowers



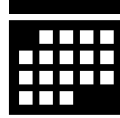
***SPRING SALE***

***Arts, Crafts & White Elephant Sale***

***Saturday, May 17, 10 am – 2pm***

Hi Everyone – Church Family Life/ Hospitality is hosting an arts, crafts, & white elephant sale event. We invite any artists, crafters, or anyone interested in helping with this event to contact Christine Grevstad or Carol Edwards. More info to come!!!

For artist or crafter applications please contact Carol Edwards (caedwards760@ gmail.com or call 401-212-0419)



**On the Calendar**

**Thursday, April 10 @ 6pm**  
Praise Team

**Thursday, April 10 @ 7:30pm** Traditional choir

**Saturday, April 12 @ 11am-2pm** Eggstravaganza

**Palm Sunday, April 13 @ 10am** Contemporary Worship

**Maundy Thursday, April 17 @ 6pm** Soup & Service

**Good Friday, April 19 @ 6:30pm** Worship Service

**Easter Sunday, April 20 @ 9am** Contemporary  
 @ 11am Traditional  
 Worship

Mondays @ 6:30pm  
NA Meeting – Learn to Live

Tuesdays @ 9:30am  
Prayer Warriors /  
Prayer Circle ALL  
WELCOME!

Tuesdays @ 4:30pm  
Bistro Dinner at Peace  
Dale Dinner Table

Tuesdays @ 6:30pm  
AA Meeting

Tuesdays @ 6:30pm  
Bell Choir rehearsals  
ALL WELCOME!



**Easter Lilies**

**We will still accept orders and dedications for Easter Lilies through Sunday 4/13. For a form, please see last week’s E-Light or locate one at church**

***(on the name tag table or back of Sanctuary).***



**Eggstravaganza Saturday!**

Saturday, April 12  
@ 11 am – 2 pm

If it rains, we'll move inside. Same great event, just inside where it's warm and dry

# Eggstravaganza

Egg Hunt, Egg Drop, Cascarones,  
Food, and Much More



April 12  
11 - 2

Peace Dale Congregational Church

## Tabitha's Closet

Open Saturdays 9:30am-12:30pm.  
Open third Tuesday of each month 4-7pm  
during Bistro.

Tabitha's Closet, PDCC's clothing ministry, offers new and gently-used clothing for affordable suggested donations. **Get what you need, pay what you can.**

**DONATIONS.** Tabitha's Closet is accepting spring & summer donations. We ask that donations be laundered and delivered in a clean bag, as we don't have a washer/dryer. See [peacedalechurch.org](http://peacedalechurch.org) for a list of what we do and do not accept.

**VOLUNTEER!!** We would love more volunteers! If you would like to help sort clothes, staff this effort, or do marketing, please contact [gsfaucher@gmail.com](mailto:gsfaucher@gmail.com) or [lynnehandayan@gmail.com](mailto:lynnehandayan@gmail.com)

**LATEST UPDATES** on Instagram  
[#shoptabithascloset](https://www.instagram.com/shoptabithascloset)

**SPREAD THE WORD!**

Swing into Spring!

March 18-April 26th

With our Egg Hunt event!

Come find your discount!\*



PDCC's

Eggstravaganza

April 12th, 11am-2pm

Food, fun and games!

**GET WHAT YOU NEED, PAY WHAT YOU CAN!**

Open Saturdays 9:30am- 12:30pm

Join us Monthly for Third Tuesdays at

Tabitha's from 4-7pm

\*Suggested Donation

Office Door from Parking Lot, downstairs

Peace Dale Congregational Church

261 Columbia St. Peace Dale RI 02879

[Peacedalechurch.org](http://Peacedalechurch.org)



## April Flower Purchases Benefit Peace Dale Dinner Table



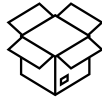
In April, purchases of **specially marked** flower bouquets at the Narragansett Stop and Shop generate donations to the Peace Dale Dinner Table (\$1 per bouquet). The Narragansett Stop and Shop has selected Dinner Table as the local hunger organization of the month.

## White Elephants



**YOU ARE SO GENEROUS!** The extra shower & Christmas gifts, your beautiful decoratives and small

appliances, and so much more are starting to fill our shelves. We could really use some **mid-size boxes** that will close. We are preparing for our Sat. 5/17 sale.



**WORK DAY: Thurs. 4/17** – 10 to 11:30 AM

## Social Justice in Action



For THIS WEEK'S list of events and opportunities, check out the [Social Justice Committee info](#) on the Missions or Groups section of our PDCC website. Submitted by Joanne Haynes

## PDCC Seeks New Worship Music Director

Following the departure of Nathaniel Baker, Peace Dale Congregational Church is seeking new worship music leadership. A search committee is being formed to search for persons to direct our traditional and contemporary choirs and an organist. We are searching for interim leadership as well as a director to lead our worship music in the future. If you know of anyone who may be qualified and interested, please contact Kurt Totten, Music Board Chair at [kurttotten34@gmail.com](mailto:kurttotten34@gmail.com).

## You Are Invited

*To a Celebration  
of Life for  
Gail E. Birchell*

May 16, 2025  
2-4pm  
20 Winchester Dr.  
Wakefield, RI



Please **RSVP** by  
**April 16** to  
[SDPARKRANGER@gmail.com](mailto:SDPARKRANGER@gmail.com)

## Come Make Music with Us!



Our Praise Team, Traditional Choir, and Bell Choir welcome you!

Rehearsals are once a week, typically in the evening. Ask a choir member after worship about rehearsal dates, check the Breeze EVENTS calendar, or check the On the Calendar feature on page 2. If you are interested in a Once-a-Month commitment to sing with Family Workshop, see below.

## Once-a-Month Singers



We have a somewhat animated group who sing with the family service the 4th week of each month (**next up is April 27**). You do not need to read music, just enjoy

singing together and show it. I email you videos and music/lyrics of all the pieces ahead of time so you can practice. We rehearse just once at 9 AM before the family service. **Feel free to try us out. CONTACT** [jane.stabile@outlook.com](mailto:jane.stabile@outlook.com) or 508 395-1172

## April Mission of the Month: Egg-a-Day Haiti

### A global partnership of the Southern New England Conference, United Church of Christ



A small team traveled to Haiti in 2012 after Hurricane Sandy had ravaged a portion of the country. Shocked to see so many empty seats in the schools the team learned

that much of the agricultural land had been destroyed and that food scarcity had become an issue. Many children were too hungry and weak to come to school. The schools had no funds to provide food for everyone in need. The team immediately arranged for some rice, beans, and pasta to be sent to the area. But a long-range solution was needed.

A chance meeting on the flight back from Haiti to New York led two women to discover a common concern: the hungry children they had seen during their visit. By the time the plane landed, the two had vowed not only to find a way to feed the children, but were determined to find a way to help the Haitians in the communities they serve become self-sufficient and produce their own food. That was the birth of the Egg-a-Day Nutrition Program (formerly known as OneEgg Haiti) which has, since 2013 provided high-quality animal protein in the form of a hard-boiled egg to over 2500 children throughout Haiti. The goal is to make the program sustainable by educating individuals, especially school children, about how to raise their own food and chickens.

The eggs are purchased from two poultry farms in Haiti with funds raised by various churches throughout the conference. The eggs are picked up every two weeks by our in-country program coordinator in a pick-up truck and delivered to the schools and orphanages that are part of the Egg-a-Day program. At one point, before the Covid-19

pandemic caused the closure of schools throughout Haiti, there were 17 sites from Port-au-Prince, to Mirebalais to Miragoane receiving eggs. Currently the program continues providing eggs to the orphanages where children live full time.

The eggs are delivered raw and unrefrigerated. An unrefrigerated egg will keep for between 14 and 21 days – if not stored in the hot sunlight. Volunteers at the sites cook the eggs (mostly on open fires) and serve them to the children for breakfast, snack or lunch each day. It is hard to understand, unless you have traveled to Haiti, how difficult it is to move these eggs from the farms to the sites to the children over roads that are rough, clogged with traffic and sometimes not paved.

The program is funded by donations from churches and individuals throughout our conference. For several years, those donations were supplemented by additional financial support from OneEgg.org, a charitable organization that ran a similar program in Africa. However, that organization is no longer able to continue supporting our program. Now we rely solely on donations from individuals and churches.

It does not take much - \$60 will feed a child an egg a day for one year. More information on [sneucc.org/egg-a-day](http://sneucc.org/egg-a-day).

Thank you for your generosity,  
The Missions Board

PDCC supports Egg-a-Day Haiti as our April Mission of the Month. You may donate by 1) placing your gift in the Missions basket during Sunday service, 2) sending a check to the church office @ 261 Columbia Street, Peace Dale, RI 02879, **Checks should be made out to PDCC with "Egg-a-Day" in the memo line** or 3) clicking the **Give now** button here to donate online ([peacedalechurch.org/ways-to-give](http://peacedalechurch.org/ways-to-give)).

**Give now**

## Church Family Life Events

**NEW 4/1 – 5/31 Cemetery Preservation & Awareness Weeks.** Free programming that transforms forgotten headstones and historic landscapes into immersive classrooms, nature trails, and art exhibits. 60+ events. New events added weekly, and updated listings are available online, from moonlit tours of Revolutionary War sites to kid-friendly clean-up days with local historians. <https://rihistoriccemeteries.org/events.aspx>

**NEW 4/10 – 13 Wickford Village Daffodil Days** with music, fun and food around the village all weekend. <https://wickfordvillage.org/pages/daffodil-days>

**NEW Fri. 4/11 at 7:30 PM Cheryl Wheeler & Kenny White** at the Courthouse Center for the Arts, West Kingstown. Renowned singer-songwriter Cheryl Wheeler performs an unforgettable mix of humor, emotion, and music. Kenny's performances are unforgettable - known for moving audiences to both laughter and tears, sometimes in the same song. \$33 PP <https://courthousearts.org/events/list/>

**Fri. 4/11 @ 7 – 9 PM, The Tracy Chapman Chapel** – KCC friend Kim Trusty will perform Chapman's iconic songs with her live band at a unique musical/spiritual experience featuring the music of Grammy Award-winner Tracy Chapman touching on faith, social justice, and all matters of the heart. Rev. Jan Gregory-Charpentier of KCC will provide some spiritual guidance throughout the evening. \$20 – 30 & info at [eventbrite.com/e/the-tracy-chapman-chapel-with-kim-trusty-and-friends-tickets-1207666556179?aff=oddtcreator](https://eventbrite.com/e/the-tracy-chapman-chapel-with-kim-trusty-and-friends-tickets-1207666556179?aff=oddtcreator)

**Fri. 4/11 @ 5:30 PM Open Rehearsal; 4/12 @ 7:30 PM Saint Saens Thundering Organ Symphony at RI Philharmonic Orchestra** at The Vets 667 Waterman Ave, East Providence, RI. Prices start at \$20. <https://tickets.riphil.org/single-ticket>

**Fri. 4/11 @ 11:30 AM LIVE MUSIC by the URI Tau Beta Sigma National Honorary Band Sorority** at SK Senior Center, 25 Dominick Rd., Wakefield. No registration needed. Call 401 789-0268 x2 for info.

**NEW Fri. 4/11 at 7:30 PM URI University Artist Series: The Lodger** live soundtrack, a 1927 silent film directed by Alfred Hitchcock, with a newly composed score by Joseph Williams II. Live musical accompaniment is provided by the Great Necks Guitar Trio at 105 Upper College Rd. \$10 – 15 PP <https://www.eventbrite.com/e/university-artist-series-the-lodger-spring-2025-tickets-1111691532299?aff=oddtcreator>

**NEW Sat. 4/12 from 6 AM to 4 PM Youth Fishing Opening Day of Trout Season** at Biscuit City Preserve, 178 Springdale Dr., Kingston. Join the opening day of trout season at the youth-only fishing Scott Evans Memorial Pond at Biscuit City Preserve in Kingston restocked with brook and rainbow trout. No registration required. ONLY children ages 14 and under may fish. [https://sklt.org/events\\_calendar/youth-fishing-opening-day-of-trout-season-at-biscuit-city-preserve/](https://sklt.org/events_calendar/youth-fishing-opening-day-of-trout-season-at-biscuit-city-preserve/)

**NEW Sun. 4/13 at 2 PM Musica Dolce presents, "Three B's"** at St. Peter's by-the-Sea Church in Narragansett. The concert features Bach's dynamic G Minor Sonata for viola and piano, the passionate Clarinet Sonata in F Minor by Brahms, and Beethoven's seminal first-String Quartet, Op 18 #1. <https://www.musicadolce.org/upcoming-concerts>

**NEW 4/19 from 8:30 – 11 AM Breakfast with the Easter Bunny at Battleship Cove**, Fall River. Enjoy a pancake breakfast, an exploration of the ships, crafts, an Easter egg scavenger hunt, and a take-home photo with our special guest! <https://www.battleshipcove.org/event-details/breakfast-with-the-easter-bunny-1>

**NEW Mon. 4/21 at 6PM America and the Holocaust: Jim Crow Laws, Eugenics, and the March Toward Genocide in Nazi-Occupied Europe** a 75 min. presentation that examines the national and historical contexts in which racism manifested in the two countries, and explore how the pseudoscience of eugenics as well as concerns about "racial purity" found its way into the laws of the United States and Nazi Germany. Presented by Barbara Wahlberg, Chair of the RI Holocaust and Genocide Education Commission at Narragansett Library. <https://mauryloontjens-ri.whofi.com/calendar/event/1268107?method=embed>

**Sat. 4/19 at 7 PM (doors) The Van Pelt Trio.** Live musical accompaniment is provided by the Great Necks Guitar Trio, a family band featuring Erika Van Pelt, Sarah Van Pelt (yes this is PDCC's former soloist) and Collin Van Pelt at 25 Village Sq. Dr., South Kingstown. \$20 PP. <https://www.towerhillbrewing.com/live-events/35dyvulxr5q49dti9ueww0n8jyofl6>

**Thurs, 4/24 from 6 – 9 PM Hammer & Ales Fundraiser** at Tower Hill Brewing in South Kingstown! Celebrate 35 years of South County Habitat for Humanity. Includes drinks, food, raffles,

and music by Gooseberry Road! Tower Hill Brewing  
- South County Commons - 25 Village Square, SK.  
\$25 PP in advance or at the door.

[towerhillbrewing.com/live-events/hammer-ales-habitat-for-humanity](https://towerhillbrewing.com/live-events/hammer-ales-habitat-for-humanity)

**Sat. 5/31 @ 6 – 10:30 PM Light on the Water, A Night of Hope** for the Domestic Violence Resource Center. The Dune's Club, 137 Boston Neck Rd., Narragansett. The evening begins with cocktails and a silent auction followed by a seated dinner and dancing to the tunes of the Boston based band, Hot Mess! (Our favorite band.) Tickets

<https://dvrcsc.org/events/> Order soon; if desired, ask to sit at Jane & Steve Stabile's table. For some of us this event is becoming a tradition.

### **Your choice of date & time for the RIWalks**

**Challenge** – The Rhode Island Land Trust Council has partnered with great local businesses to promote the #RIWalksChallenge. Hidden along 34 trails are unique steel-creature sculptures inspired by nature. Each creature has a QR code for you to scan and track your progress, and when you have found all 34 you will be a challenge winner and win some great prizes! There are many trails in a variety of towns. Fun for everyone!

<https://www.riwalks.org/challenge.php>

## **Alzheimer's Caregiver Conference**

**Thursday April 17, 2025 @ 8:30am - 4:30pm**  
**Crowne Plaza, 801 Greenwich Ave, Warwick, RI 02886**

**Register by noon April 12 – click here:**

(<https://action.alz.org/PersonifyEbusiness/Default.aspx?TabID=1357&productId=712575480>)

Our 14<sup>th</sup> annual conference brings together caregivers, individuals living with Alzheimer's disease and other dementias, community-based clinical care providers, clinical researchers, and scientists from across the state. Throughout the day, attendees will gain valuable insights, tools and resources tailored for caregivers, discuss groundbreaking research advances, and learn about ongoing clinical trials in Alzheimer's disease and related dementias.

We welcome Katie Brandt, *Director Caregiver Support Services and Public Relations, Massachusetts General Hospital Frontotemporal Disorders Unit* who will present our keynote address *Love, Loss & Resilience: A Caregiver Perspective on Life Lived Alongside Dementia*

Our conference highlights include:

- A full day of professional respite care so a caregiver can attend the conference.
- An immersive experience to demonstrate living with dementia to help develop self-awareness, understanding and empathy for those living with dementia.
- Numerous breakout sessions for those attending the conference to choose from.
- Poster presentations.
- Plenty of time for attendees to meet with local resources from our Rhode Island Community to support their caregiving journey.

### **Alzheimer's Association Rhode Island Chapter**

245 Waterman Street, Suite 306

Providence, RI 02906

24/7 Helpline: 800.272.3900

## No Mow May – Let's help the pollinators!

Did you know that our lawns are the single largest irrigated crop in the United States. It's true.

Our lawns cover 40 million acres. That represents 2% of land dedicated to a crop that contributes significantly to habitat loss, provides little benefit to wildlife, and does not produce food.

We mow our lawns, fertilize them, water them, and treat them with chemicals that can be harmful to bees and other invertebrates. Our mowing season coincides with the emergence of the bees. They are hungry while we are mowing down some of their sources of food. Let's step back from this cycle and put a pause on mowing our lawns in May.

1 in 3 of the foods we eat require the services of the pollinators as well as 80% of our flowering plants. Pollinators contribute \$15 billion annually to the economy in agricultural products. For example, almond growers are using 2 hives of bees per acre. The bee population has been in decline in recent years.

It would be very beneficial to the bees and other invertebrates to cut back on lawn mowing in May. You can tailor your efforts to suit your needs. If you don't want to pause mowing for the entire month, you could choose to pause for a couple of weeks. Other sources of food for the pollinators usually appear at the end of May when we will resume mowing.

Some people may want to keep a tidy border around the un-mowed section with a No Mow May sign planted in the center explaining your actions. No Mow May signs are available online.

Our choices about No Mow May will make a difference in the lives of the pollinators. Our food sources depend on the pollinators.

## Share Your Story: Caring for God's Creation

As followers of Christ, we are called to be good stewards of the earth. We invite you to share a short testimonial about something you've done—big or small—to help mitigate the climate crisis. Whether you've reduced waste, planted trees, changed your energy use, or advocated for the environment, your story can inspire and encourage others in our church community to take action.

You can share your story during a church service or record a short video that will be played during a future service. To participate, simply let us know you're interested by contacting a member of the Green Team or Green Team Chair George Faucher at [glfaucher@gmail.com](mailto:glfaucher@gmail.com).

Thank you for being a light in the world and helping to protect the gift of creation!

**EARTH DAY**  
FREE - Come check out - FREE

Thanks to Green Team Member,  
Kingstons Congregational Church for hosting "Tasty Treats"  
Tabitha's Closet will be open: an important Reuse!  
Our efforts to put forward a Green Amendment for RI  
Updated recycling information  
Hear about initiative to have composting in schools

What the SK Sustainability Committee is up to  
Learn about Composting and more!  
Solar Toys and a Plant Swap!

**An Earth Day Celebration**  
Sunday  
April. 27th  
11:15 - 1:00 p.m.

**PEACE DALE CONGREGATIONAL CHURCH**  
261 COLUMBIA ST. SOUTH KINGSTOWN RI 02879  
PHONE: 401-789-7313 PEACEDALECHURCH.ORG

Celebration will be a RAIN or SHINE event!  
Poster Design by guycassaday.com



## PDCC Green Team

**JOIN US!** For anyone, of all ages, interested in learning more about the "Green Team", please contact George Faucher at [glfaucher@gmail.com](mailto:glfaucher@gmail.com) and/or Don Hermes at [dhermes33@gmail.com](mailto:dhermes33@gmail.com)



## Gift Cards with a Kick



You get a card for the full amount *and* every

retailer gives money back to the church for the money you spend.

Use RaiseRight to buy **gift cards** for teachers, service providers, and family.

Use RaiseRight to buy **cards for your own personal shopping** of groceries, etc. Remember your reusable bags and gift cards in your everyday shopping trips.

- RaiseRight (formerly SCRIP) table sales are available on Sundays in Fellowship Hall after worship.
- Cards in stock include:  
Belmont (\$25 & \$100), Dave's (\$100), Shaw's (\$25 & \$100), Stop & Shop (\$25 & \$100), CVS (\$25), Walgreen's (\$25), Amazon (\$25 & \$100), Applebee's (\$25), Brickley's Ice Cream (\$20), Dunkin' (\$10 & \$25), Marshall's (\$25), Matunuck Oyster Bar (\$50), Old Mountain Lanes (\$25), Panera (\$10 & \$25), Starbucks (\$10 & \$25), Walmart (\$25).

**Questions?** Contact Deb Shaw at [dkshaw5@cox.net](mailto:dkshaw5@cox.net) or stop by the table on Sunday after worship.



## Prayer Matters



To build fellowship and make full use of the congregational power of prayer, we offer this Prayer Matters space to allow

members of our community to lift up their names and requests for prayer. This adds to the opportunities for congregants to lift up their prayers during Sunday service, and to request the care of the [Prayer Circle](#) that gathers every Tuesday morning or of our [Called to Care](#) ministry.

### How to share your prayer

You may choose to use all or any combination of: Joys & Concerns on Sunday morning, Prayer Circle ministry, Called to Care ministry, and the new Prayer Matters section of the newsletter.

- To lift up your prayer during **Sunday Service**, simply raise your hand, voice your joy or concern and then say, "this is my prayer"; the congregation responds "this is our prayer". Prayer requests made during Sunday service are shared aloud with those in attendance.
- To request the care of **Prayer Circle**, submit the [online form](#) or call the church office at (401) 789-7313. These requests are shared only with members of this group.
- To request the support of our [Called to Care](#) ministry team, call the church office at (401) 789-7313 or submit the [online form](#). These requests are shared only with members of this group.
- To request your prayer be included in the E-Light newsletter, send email to [office@peacedalechurch.org](mailto:office@peacedalechurch.org) or call the church office at (401) 789-7313 (leave message for MaryLou).

Shalom, Pastor Fred

## Peace Dale Congregational Church

261 Columbia Street  
Wakefield RI 02879

p: (401) 789-7313 f: (401) 789-6127  
web: [peacedalechurch.org](http://peacedalechurch.org)  
[facebook.com/PeaceDaleChurch](https://facebook.com/PeaceDaleChurch)