



Peace Dale
CONGREGATIONAL CHURCH

PDCC E-Light Newsletter

261 Columbia Street
Peace Dale, RI 02879
(401) 789-7313

August 21, 2025

SUNDAY WORSHIP
10:00 AM

Office Hours

Mon, Wed, Thurs 10am-2pm

Contact Us

SENIOR MINISTER:

THE REV. A. FRED EVENSON
FRED.E@MAC.COM

ADMINISTRATIVE ASSISTANT:

MARYLOU McMILLAN
OFFICE@PEACEDALECHURCH.ORG

Birthdays

Darryl Keith
George Krochin
Shelly Moses
Linda Tucker
Jack Zedella

Visit Our Webpage!

peacedalechurch.org

Follow us on Facebook!

[Facebook.com/PeaceDaleChurch](https://www.facebook.com/PeaceDaleChurch)

Last Week's E-Light

peacedalechurch.org/e-li

"To Heal and Liberate"

Luke 13:10-17

This Sunday we welcome to our pulpit the Rev. Colin Leitch whose message, "To Heal and Liberate", will reflect the scripture of Jesus healing a woman crippled by spirit for many years.



Worship Flowers

The flowers of Sunday, August 24 are given to the Glory of God by Claudia and Peter Swain in thanks for the outpouring of love and support given to us during this challenging time.

Flowers are a beautiful way to remember a loved one, celebrate a special occasion, or simply give to the glory of God. **If you are interested in donating Sanctuary flowers** for September or October please contact Wendy Sisson (401.932 2055 or wendyhighschool@gmail.com).

Beware Phishing Attempts "from Fred"

Pastor Fred (or PDCC) will NOT send you voicemail or text saying "I need your help" or "I have something private to talk to you about", or "please text me a time I can call you." We ask you to, unfortunately, be suspicious of these kinds of messages. Do not reply to them.

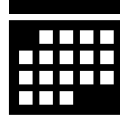
- **PHONE** – Double check the phone number? Does it match what you know to be the church or Fred?
- **EMAIL** – Look closely at the email address INSIDE the < >. Even if the sender line tries to say they are the church or pastor, the actual address inside the < > will show who sent it. Does the email address match what you know to be the church or Fred?
- **BACK TO BASICS** – If you really think we contacted you, go back to the phone numbers or email address you have in your Contact list or church directory, and call or email us from there.

In essence, if you think it might actually be real, ask Fred or the church office about it.

E-LIGHT NEWSLETTER – the newsletter is sent to you through a bulk mail function. The email says from "Our church Peace Dale Congregational Church via sendgrid.net". If you try to reply to it, it shows the church office email address.

IN THIS ISSUE

August Flowers Benefit Dinner Table
August Mission of the Month: Habitat for Humanity
Be a Bell Ringer
Beware Phishing Attempts "From Fred"
Come Sing with Us
Gift Cards with a Kick
Got Frames?
Join the Green Team
On the Calendar
Outdoor Christian Rock Concert – 8/30
Prayer Matters
Social Justice in Action
Summer Worship and Pastoral Care
Tabitha's Closet – PAUSE summer donations
Welcome Back Potluck Brunch – 9/7
White Elephants – Update
Worship Flowers
Youth Calendar for Fall 2025



On the Calendar

Sunday, August 24 @
10am Traditional Service
with Rev. Colin Leitch
delivering the message

Sunday, August 31 @
10am Blended Service with
Rev. Scott Spencer
delivering the message

Sunday, September 7 @
10am Traditional Worship
with Communion. Rev. Fred
Evenson delivering the
message

Sunday, September 7 @
after worship Welcome
Back Potluck Brunch

Mondays @ 6:30pm
NA Meeting – Learn to
Live

Tuesdays @ 9:30am
Prayer Warriors /
Prayer Circle ALL
WELCOME!

Tuesdays @ 6:30pm
AA Meeting

Tuesdays @ 6:30pm
Bell Choir rehearsals
ALL WELCOME!

Welcome Back to Church Potluck Brunch – 9/7

To Welcome back Pastor Fred and those members that may have been away for awhile, the Missions committee in collaboration with Church Family Life/Hospitality will be sponsoring a

WELCOME BACK TO CHURCH EVENT

Sunday, September 7 @ 11:00 a.m. to 2 p.m.

an outdoor pot luck brunch event
after Service, outside in The Grove

- ❖ Beverages and dessert will be provided.
- ❖ Christian Education will provide entertainment for the kids.
- ❖ There will be a corn hole game for the adults!

RSVP & QUESTIONS

- ❖ **If you plan to attend, please list the type of covered dish you will bring** for the food table on the **signup sheet in Fellowship Hall**. No hot dishes please.
- ❖ If you plan to attend but **can't get to the signup sheet or have other questions regarding the food**: Contact Christine Grevstad (christinegrevstad@ hotmail.com 401 284-6483)

All other inquires contact James McMonigle
(McMonscience@ hotmail.com 401 447-8757)



White Elephants



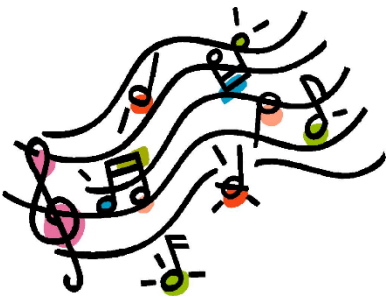
Amazing! Thank you for so many donations! Wait until you see them at either the October 4th Pumpkin Palooza sale or the Christmas Bazaar on December 6. The pre-sale white elephant team keeps everything sorted, cleaned, priced and ready to go. Yahoo!

Please save those October and December dates – we need workers and shoppers.

Yes, we give lots of over stocks and not quite top notch items away. That gives them renewed life and helps other organizations like Savers, Big Brothers & Big Sisters, and Veterans.

KINDLY REMEMBER - No books, CD's, large furniture, pillows, paintings/pictures, computer items OR hazardous materials.

New Music Director



The music director search committee would like to announce that Dan Monte has been selected as our director of worship music; he will begin in September.

Dan comes from a long line of Portuguese and Canadian musicians settled in Southeastern Coastal Massachusetts. He deeply enjoys collaborating with other artists, has been seen playing Off-Broadway (The J2 Spotlight Theatre Company) and accompanying Modern & Improv Dance Classes (Rutgers University). Dan holds a bachelor's degree in Music Performance from Ithaca College and a master's degree in Music Performance from Rutgers University. Dan is also an avid composer of contemporary classical music, jazz, pop, film, and commercial music. Currently, Dan lives in Massachusetts where he teaches music at UMASS Dartmouth, performs as a freelance musician and music director, and enjoys playing chess.

Submitted by Kurt Totten

August Flower Purchases Benefit Peace Dale Dinner Table

In August, purchases of **specialty-marked** flower bouquets at the **Narragansett Stop and Shop** will generate donations to the Peace Dale Dinner Table (\$1 per bouquet). The Narragansett Stop and Shop has again selected Dinner Table as the local hunger organization of the month for August.



The Peace Dale Dinner Table is currently providing 250 meals each Wednesday.



Come Sing With Us!

Our singers and bell ringers welcome you! Summer rehearsals for Praise Team, Traditional Choir, and Bell Choir are more relaxed (and less frequent). Ask a choir member after worship about making music in the summer! Singers practice Sunday @ 9am before 10am worship.



Be a Bell Ringer!

The ringers in our Bell Choir welcome you! Teenagers on up in age. Ability to read music is a plus.

Summer is a great time to try out bell ringing and see if you like it. Summer rehearsals for Bell Choir are more relaxed (and less frequent). We practice most (but not all) Tuesdays @ 6:30pm. Ask a choir member after worship about making music in the summer or send an email to office@peacedalechurch.org!

Social Justice in Action



For THIS WEEK'S list of events and opportunities, check out the [Social Justice Committee info](#) on the Missions or Groups section of our PDCC website. Submitted by Joanne Haynes

Join PDCC Green Team!

For anyone, of all ages, interested in learning more about the "Green Team", please contact George Faucher at glfaucher@gmail.com and/or Don Hermes at dhermes33@gmail.com



Got Frames?

If you have any of those clear Lucite/plastic frames laying around, we'd be happy to have them. The Pumpkin Faeries are thinking ahead to Pumpkin Patch, and would like to use the frames to display prices amidst the pumpkins. We'll take up to ten of each size: 3" x 5" and 4" x 6" acrylic frames. There will be a box near the office for collection.



Outdoor Christian Rock Concert



Living Hope Band

August 30th 4:00 to 6:00 PM
Rain or Shine

Free Admission - Hot Dogs & Bottled Water

First Baptist Church of Narragansett
305 Kingstown Road

August Mission of the Month: Habitat for Humanity of South County

This month, our mission collection will support Habitat for Humanity. Founded in 1990, South County Habitat for Humanity (SCHH) has been dedicated to eliminating substandard housing locally and worldwide. SCHH serves all towns in Washington County, Rhode Island. Read more about South County Habitat for Humanity and SCHH's programs – expanding home ownership, building accessibility ramps, the ReStore resale store – at southcountyhabitat.org/.



Seeking to put God's love into action, Habitat for Humanity brings people together to build homes, community and hope. Programs include:

- The home construction and home ownership program provides a unique opportunity for those in need of an affordable place to call home to take an active role in the construction of and eventual purchase of their own home.
- Ramp Up RI serves low-income residents of Washington County, RI in need for a ramp for themselves or a household member.
- The Restore is a non-profit store and donation center that sells new and gently used furniture, building materials, appliances, and home accessories to the public at discounted prices

Thank you for your generosity,
The Missions Board
www.peacedalechurch.org/missions

The PDCC Missions Board has chosen to support Habitat for Humanity with your Mission of the Month donations in August. You may donate by 1) placing your gift in the Missions basket during Sunday service, 2) sending a check to the church office @ 261 Columbia Street, Peace Dale, RI 02879, **Checks should be made out to PDCC with "Habitat for Humanity" in the memo line** or 3) clicking the **Give now** button here to donate online (peacedalechurch.org/ways-to-give).



Summer Worship & Pastoral Care

WORSHIP

Pastor Fred Evenson, our Senior Minister, is away for the summer on sabbatical. We would like to let you know about the services and guest ministers providing the message at each service.

We hope you will come and join us when you can.

Shalom,

The Board of Deacons

PASTORAL CARE

The Rev. Enid Watson is providing pastoral care coverage from now until September. Rev. Watson is an ordained UCC clergywoman, PDCC member and Deacon. She is available for whatever pastoral care concerns arise over the summer. Enid will continue meeting with the Prayer Circle. You may request pastoral care through the Church Office or reach out to Rev. Watson directly. While her contact info is in Breeze, it is also included here:

The Rev Enid Watson
617-680-5734
watsonenid@gmail.com

August 24 Traditional Worship

Rev. Colin Leitch will provide the message. Rev. Leitch has served at Church on the Hill in Boston and at First Congregational Church in Princeton, MA.

August 31 Blended Worship

Rev. Scott Spencer will provide the message. Rev. Spencer served as pastor of the Woodridge Congregational Church in Cranston, Rhode Island.

Tabitha's Closet

Open Saturdays 9:30am–12:30pm.



AUGUST 16 & 23

SUMMER'S END

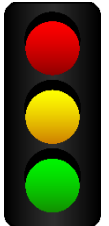
SALE

FILL A BAG

\$10.00

Tabitha's Closet, PDCC's clothing ministry, offers new and gently-used clothing for affordable suggested donations. **Get what you need, pay what you can.**

PAUSE DONATIONS – August 1, we will stop taking summer donations. **September 7**, we will begin taking fall-winter items. We are in special need of infant and childrens clothing.



DONATIONS. We ask that clothing donations be laundered and delivered in a clean bag, as we don't have a washer/dryer. We happily accept current-season clothing: shirts, pants, skirts, dresses, shorts, sweaters, sweatshirts, coats, hats, gloves for children and adults, belts, purses, costume jewelry. See peacedalechurch.org for a list of what we do and do not accept.

VOLUNTEER!! We would love more volunteers! If you would like to help sort clothes, staff this effort, or do marketing, please contact gsfaucher@gmail.com or lynnehandayan@gmail.com

LATEST UPDATES on Instagram
[#shoptabithascloset](https://www.instagram.com/shoptabithascloset).



You
are
part
of
God's
story

PDCC Youth Calendar Fall 2025

September

- Sunday 7 Youth Connect Kick-off Party followed by Church Picnic 10 AM
- Sunday 14 Youth Connect 10 AM
- Sunday 21 Youth Connect 10 AM
- Sunday 28 Family Service: The Bible and You--Meet special guests from God's Story 10 AM
Followed by Community Pumpkin Unloading Party

October

- Saturday 4 Pumpkin Palooza 11 AM-2 PM
- Sunday 5 Youth Connect 10 AM
- Saturday 11 Pumpkin Palooza rain date
- Sunday 12 No Youth Connect
- Sunday 19 Youth Connect 10 AM
- Saturday 25 Youth Group Spooky Sleepover and Mission Project PDCC 7 PM
- Sunday 26 Family Service: The Jacob and Esau Family Reunion 10 AM
Followed by Chili Fundraiser and Children's Costume Party

November

- Sunday 2 Youth Connect 10 AM
- Sunday 9 No Youth Connect
- Sunday 16 Youth Connect 10 AM
- Saturday 22 Youth Group Friendsgiving PDCC 5 PM
- Sunday 23 Family Service: Daniel in the Den of Lions 10 AM
Followed by Youth Group Thanksgiving Pie Sale
- Sunday 30 No Youth Connect

Gift Cards with a Kick



You get a card for the full amount *and* every

retailer gives money back to the church for the money you spend.

Use RaiseRight to buy **gift cards** for teachers, service providers, and family.

Use RaiseRight to buy **cards for your own personal shopping** of groceries, etc. Remember your reusable bags and gift cards in your everyday shopping trips.

- RaiseRight table sales are available on Sundays in Fellowship Hall after worship.
- Cards in stock include:
Belmont (\$25 & \$100), Dave's (\$100), Shaw's (\$25 & \$100), Stop & Shop (\$25 & \$100), CVS (\$25), Walgreen's (\$25), Amazon (\$25 & \$100), Applebee's (\$25), Brickley's Ice Cream (\$20), Dunkin' (\$10 & \$25), Marshall's (\$25), Matunuck Oyster Bar (\$50), Old Mountain Lanes (\$25), Panera (\$10 & \$25), Starbucks (\$10 & \$25), Walmart (\$25).

Questions? Contact Deb Shaw at dkshaw5@cox.net or stop by the table on Sunday after worship.



Prayer Matters



To build fellowship and make full use of the congregational power of prayer, we offer this Prayer Matters space to allow

members of our community to lift up their names and requests for prayer. This adds to the opportunities for congregants to lift up their prayers during Sunday service, and to request the care of the [Prayer Circle](#) that gathers every Tuesday morning or of our [Called to Care](#) ministry.

How to share your prayer

You may choose to use all or any combination of: Joys & Concerns on Sunday morning, Prayer Circle ministry, Called to Care ministry, and the new Prayer Matters section of the newsletter.

- To lift up your prayer during **Sunday Service**, simply raise your hand, voice your joy or concern and then say, "this is my prayer"; the congregation responds "this is our prayer". Prayer requests made during Sunday service are shared aloud with those in attendance.
- To request the care of **Prayer Circle**, submit the [online form](#) or call the church office at (401) 789-7313. These requests are shared only with members of this group.
- To request the support of our [Called to Care](#) ministry team, call the church office at (401) 789-7313 or submit the [online form](#). These requests are shared only with members of this group.
- To request your prayer be included in the E-Light newsletter, send email to office@peacedalechurch.org or call the church office at (401) 789-7313 (leave message for MaryLou).

Shalom, Pastor Fred

Peace Dale Congregational Church

261 Columbia Street
Wakefield RI 02879

p: (401) 789-7313 f: (401) 789-6127
web: peacedalechurch.org
facebook.com/PeaceDaleChurch