



**Peace Dale**  
CONGREGATIONAL CHURCH

# PDCC E-Light Newsletter

261 Columbia Street  
Peace Dale, RI 02879  
(401) 789-7313

May 14, 2026

## SUNDAY WORSHIP 10:00 AM

### Office Hours

Mon, Wed, Thurs 10am-2pm

### Contact Us

SENIOR MINISTER:

THE REV. A. FRED EVENSON  
FRED.E@MAC.COM

ADMINISTRATIVE ASSISTANT:

MARYLOU McMILLAN  
OFFICE@PEACEDALECHURCH.ORG

### Birthdays

Priscilla Archambault  
Gary Bower  
Maria Cassaday  
Ed Holt  
Mary Mason

### Visit Our Webpage!

peacedalechurch.org

### Follow us on Facebook!

Facebook.com/PeaceDaleChurch

### Last Week's E-Light

peacedalechurch.org/e-li

## Family Worship & Breakfast with Jesus May 17

You're invited to join us for "Breakfast with Jesus," an amazing, technicolor family service inspired by the show "Phineas and Ferb!"

Come for an inspiring worship service for all ages at 10 AM, followed by a delicious breakfast. It's going to be the best family service day ever!

This is the end-of-year celebration for Youth Connect as we break for the summer.



## Come Celebrate Ed's Birthday – 5/15

Please join the celebration for Ed Holt's birthday party! Stop by Fellowship Hall on Friday, May 15 between 5 and 7 PM. All of Ed's church friends are welcome to attend.

## Book Discussion Group 5/17

In the Community Room @ 11:30am. The Green Team is sponsoring a discussion group for the landmark environmental book [What If We Get It Right?](#) by Ayana Elizabeth Johnson.



## Membership Notes

- ❖ **Joyce Vertz** passed away Sunday, May 10. A Celebration of Life will be held at Peace Dale Congregational Church on **Wednesday, June 3 @ 11:00 am** with a reception to follow in Fellowship Hall. Joyce's obituary may be found through Avery-Storti [averystortifuneralhome.com/obituaries/joyce-vertz](http://averystortifuneralhome.com/obituaries/joyce-vertz)

## Worship Flowers

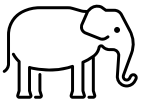


The flowers of May 17 are given to the glory of God.

Flowers are a beautiful way to remember a loved one, celebrate a special occasion, or simply give to the glory of God. **If you are interested in donating Sanctuary flowers** for May or June, please contact Lynn McCall 401 742-3949.

## IN THIS ISSUE

Adopt a Bed at PDCC – Help Our Gardens Thrive  
BRASS Key Inventory and Stewardship  
Children’s Festival @ the Y – 5/31  
Collecting Children’s Books – through Memorial Day  
Come Sing or Ring with Us  
Congregational Care: Caring for Each Other  
Ed’s Birthday Party – 5/15  
Family Worship and Breakfast with Jesus – 5/17  
Flower Children Welcome  
Gift Cards with a Kick  
Join Green Team  
Kingston Village Spring Fair – 5/16  
Knit and Crochet Met with Preschool Children  
May Mission of the Month: Shower to Empower  
Membership Notes  
On the Calendar  
Once a Month Singers  
RI UCC Meeting @ PDCC – You’re Invited  
Social Justice in Action  
Tabitha’s Closet – Men’s “May”n Event Sale 5/16  
Tunes and Tacos – June 4  
Volunteer for Tuesday Bistro  
White Elephants  
Worship Flowers  
Youth Calendar



### White Elephants

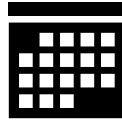
We do collect year 'round however we have space limitations both to store and to sell. The next sale is Oct. 3rd - with **fall as our theme**. Please no more summer items.

We do not take books, software, paint, clothing, mirrors, printers, liquids, furniture, big items. We love collectibles, kitchenware, decoratives, linens (only through Sept.), Christmas items, dishes, utensils, POTS & PANS, unwanted gifts, overstocks, items that deserve a home.

Come join the team and have some fun! Next work day - **Tues. 5/19 from 10 - 11:30 AM**

Missing 2 short tables from basement by the elevator. Need at least one returned.

[jane.stabile@outlook.com](mailto:jane.stabile@outlook.com)



## On the Calendar

**Friday, May 15 @**  
5-7pm Ed Holt’s  
Birthday Party in  
Fellowship Hall. All  
welcome!

**Sunday, May 17 @**  
10am Family  
Worship & Youth  
Connect End-of-Year  
Celebration, and  
Breakfast with Jesus

**Sunday, May 24 @**  
10am Contemporary  
Worship

Mondays @ 6:30pm  
NA Meeting – Learn to Live

Tuesdays @ 9:30am Prayer  
Warriors / Prayer Circle

Tuesdays @ 6:30pm AA  
Meeting

Tuesdays @ 6:30pm Bell  
Choir rehearsals

Thursdays @ 1-3pm Shawl  
Knit & Crochet

Thursdays @ 6pm  
Contemporary Choir reh

Thursdays @ 7:30pm  
Traditional Choir rehearsal



## Help Our Gardens Thrive — Adopt a Bed at PDCC!

Our church grounds are one of the first things people notice when they arrive at Peace Dale Congregational Church—and those beautiful garden beds don’t maintain themselves!

For many years, we’ve been grateful to Mary Rhoda for lovingly caring for the front beds. With Mary’s recent move, we’re looking for new volunteers to help keep our gardens vibrant and welcoming.

Would you consider “adopting” a garden bed? This simply means taking responsibility for light, ongoing care—things like weeding, watering, and occasional planting or tidying—on a schedule that works for you.

It’s a wonderful way to:

- Spend time outdoors in a peaceful setting,
- Contribute to the beauty of our church home,
- Connect with nature and our community.

Whether you’re an experienced gardener or just enjoy getting your hands in the soil, we’d love to have you involved!

**Interested?** Please reach out to George Faucher at [glfaucher@gmail.com](mailto:glfaucher@gmail.com) to learn more or to claim a garden bed.

Thank you for helping PDCC continue to bloom! 🌱

*you're invited*

**RI ASSOCIATION SPRING Gathering**  
and the  
**HISTORIC RHODE ISLAND CONFERENCE**  
*Annual Meeting*

SATURDAY, MAY 30, 2026 AT 3:00 PM  
PEACE DALE CONGREGATIONAL CHURCH  
261 COLUMBIA ST, PEACE DALE, RI

**REGISTER**

Southern New England Conference  
United Church of Christ




## Brass Key Inventory & Stewardship

As part of our ongoing efforts to care for and responsibly manage our church facilities, we are taking a fresh look at how brass keys are distributed and tracked at PDCC.

Over the years, keys have been shared as needed, but we no longer have a complete record of who currently holds them. To ensure the safety and security of our building—and to be good stewards of our shared space—we're asking for your help with a simple two-part request:

1. If you have a brass key and no longer need it, please return it to the church office at your earliest convenience.
2. If you still have a need for the brass key you have, kindly let us know that you have one (interior? exterior? a specific room?) and briefly describe your ongoing need.

**Please note: This request applies only to traditional brass keys, not to key cards which are already tracked and managed separately.**



As we review responses, there may be situations where a key card can meet your needs just as effectively as a Master Key. Our goal is to ensure appropriate access while maintaining good oversight moving forward.

If you have a key — or have questions — please contact MaryLou at [office@peacedalechurch.org](mailto:office@peacedalechurch.org) or George at [glfaucher@gmail.com](mailto:glfaucher@gmail.com).

Thank you for your help in keeping our church safe, secure, and well-managed.



## Volunteer for Bistro Dinner Table on Tuesdays

Bistro sit-down community dinners in Fellowship Hall on Tuesdays at 4:30pm!

We have a need for additional volunteers for the Bistro. **You do not need to be here every-week.**

The Bistro serves approximately 35 guests at tables, much like a restaurant. We need help to prepare and cook the meal, prepare salads, serve patrons (salad, dinner, dessert, coffee and tea), as well as

cleanup and dishwashing. We also have a volunteer to make individual desserts.

If you can help out, or want more information, please contact Cynthia Cherney (or the Church Office at [office@peacedalechurch.org](mailto:office@peacedalechurch.org) 401 789-7313)

# Tabitha's Closet

Open Saturdays 9:30am–12:30pm and 3<sup>rd</sup> Tuesday of each month 4-7pm

Tabitha's Closet, PDCC's clothing ministry, offers new and gently-used clothing for affordable suggested donations. **Get what you need, pay what you can.**

**WE NEED BAGS** – large plastic, paper, or reusable shopping bags that we can use for customers at Tabitha's.

**DONATE** We are happy to accept spring and summer items for men, women, and children, as well as costume jewelry. Please hold on any donations that are not spring/summer; our storage space is limited. We ask that clothing donations be laundered and delivered in a clean bag, as we don't have a washer/dryer.

We happily accept current-season clothing: shirts, pants, skirts, dresses, shorts, sweaters, sweatshirts, coats, hats, gloves for children and adults, belts, purses, costume jewelry. We accept shoes that are new or lightly-used. See [peacedalechurch.org](http://peacedalechurch.org) for a list of what we do and do not accept.

**TABITHA SUPPORTS OUR COMMUNITY** We serve people every week whose need exceeds their ability to pay and who are happy to gain new-to-them clothing and shoes. We also have shoppers who contribute the full "ticket price" or more for items, knowing that we reinvest the funds in the church and our missions, and to support community partners.

We are reinvesting the money raised to support social services in our community – such as the Pastor's Discretionary Fund, Church World Service Kits, Peace Dale Dinner Table, Gratitude Tree w Jonnycake Center, Tri County Community Action Agency, and Youth LGBTQ Closet (Youth Pride RI).

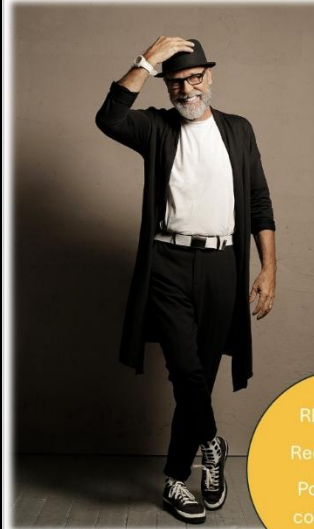
**LATEST UPDATES** on Instagram  
#shoptabithasclose

**VOLUNTEER!!** We would love more volunteers! If you would like to help sort clothes, staff this effort, or do marketing, please contact [tabitha@peacedalechurch.org](mailto:tabitha@peacedalechurch.org)

## PROM SUCCESS!

Thanks to the generosity of our wonderful congregation and the wider community, Tabitha's prom clothing drive collected 50 dresses and 12 suits! They have been given to Hollys Closet, a RI non profit with closets at Pilgrim, TollGate, Exeter-West Greenwich and Coventry High Schools, for distribution to help students feel confident and ready for their big night

## Men's "May"n Event



ALL  
MENSWEAR

2 For 1\*

Until May 30th

REMINDER

Redeem your  
Pot-o- Gold  
coins NOW!

Open Saturdays  
9:30am-12:30pm,  
3<sup>rd</sup> Tuesdays  
(Sept-May) 4-7pm

\*Suggested Donation



SHOP FOR THE WHOLE FAMILY!

Office Door, downstairs

261 Columbia St. Peace Dale RI 02879

[tabitha@peacedalechurch.org](mailto:tabitha@peacedalechurch.org)

## MORNING VOLUNTEERS?

Interested in volunteering at Tabitha's, but our afternoon time slots don't work with your schedule? Great news! We are looking for volunteers for a morning from 9-11 am. If we can recruit enough interest, we will establish a morning weekly session. If you're interested or have questions, please contact Lynne at [tabitha@peacedalechurch.org](mailto:tabitha@peacedalechurch.org)

## Thursday Knit and Crochet

**PHOTOS!** On May 7 our knitting collaboration groups worked with the cutest children from the Montessori Preschool that calls PDCC home. Carol Edwards showed the children how to make a little bunny out of a simple knitted square [photo 1], and Linda Jeans brought her therapy dog, Scout, to visit with the children [photo 2].

Boo Boo Bunny is a book written from a child's view of needing a friend; it was written to go along with every knitted bunny given out to a child in need. The author, Heather Gaffett, is a knitter who told the story while conversing with the children about how they might feel when they need a friend. Gabrielle Briggs, an SKHS student, was kind enough to illustrate the book with cute drawings the children could understand [photo 3].



**COME!** Our Prayer Shawl makers and the I Care Shawl Project makers meet every Thursday from 1-3pm in the Community Room. All knitters and crocheters welcome! We can help you learn, too. Make prayer shawls, warmth for cancer patients, small teddy bears and kittens, etc. **CONTACT** (401) 580-1712

and crocheters welcome! We can help you learn, too. Make prayer shawls, warmth for cancer patients, small teddy bears and kittens, etc. **CONTACT** (401) 580-1712

**DONATE** – Prayer Shawl/I Care Shawl Project will gladly accept donations of yarn, knitting needles, or crochet hooks.

**MULTI-GENERATIONAL** – We consistently have adults and high school students participate.

## Kingston Village Spring Fair

Saturday, May 16 from 9am-3pm

For more than 50 years, the people of Kingston Village have gathered together to welcome Spring with a traditional village fair.

The Village Fair will feature a variety of **EVENTS AND ACTIVITIES** at The Kingston Library (10 a.m. – 2 p.m.), including children's activities, fire truck rides from the Kingston Fire Department (10-2), live music by The South County Old Time Jammers, and a popular book sale sponsored by the Friends of the Kingston Library. There will also be events at The South County Art Association, The Fayerweather Craft Guild, The South County History Center, Kingston Congregational Church, Tavern Hall (the Elisha Reynolds House), and Kinney Azalea Garden.

**INFO** (<http://www.kingstonvillagefair.org/>) and Schedule of Events ([kingstonvillagefair.org/events.html](http://kingstonvillagefair.org/events.html))

**Paint Rocks to Promote Peace** South County Resistance is sponsoring a "Peace Rock" event on Saturday May 16 at the annual Kingston Village Spring Fair on the lawn of the Kingston Free Library on Route 138. Rocks and art supplies will be provided for the "Peace Rock" event. Just bring children and your own positive messages (adults welcome too!) and come out and enjoy a fun community day!



## May Mission of the Month: Shower to Empower



*Restoring Dignity. Building Trust.  
Creating Pathways Forward.*

Imagine going days—or weeks—without a shower. No clean clothes. No place to shave, wash your hair, or simply feel human. For those living unsheltered in Rhode Island, this is daily life.

But dignity can arrive on wheels.

Launched in 2018 by House of Hope CDC in partnership with Team Williams and the City of Providence, Shower to Empower is a one-of-a-kind mobile outreach program that brings compassion, care, and connection to people experiencing homelessness—right where they are.

Our 20-foot mobile unit travels five days a week to Providence, Woonsocket, Pawtucket, and West Warwick. At every stop, it offers more than just hot showers. It offers hope - haircuts that renew confidence, medical navigation that restores health, basic necessities that remind people they are not forgotten, and case management and street outreach that open doors to shelter, treatment, and housing.

For someone sleeping in a tent, car, or under an overpass, a warm shower can mean the world—a moment to feel clean, seen, and cared for. But Shower to Empower is about more than hygiene. It's about trust. It's about connection. And it's about change.

Through daily interactions with our team, we meet people in their most vulnerable moments—with no judgment and no conditions. It's this consistent, compassionate presence that helps guide individuals from crisis to stability, from the streets to housing, from surviving to truly living.

Since its launch, Shower to Empower has delivered over 11.9K showers, 2.1K haircuts, 2.7K medical services, and 2K unique users—but the true impact goes far beyond the numbers. Each act of care is a seed planted—seeds that grow into new beginnings.

The first Shower to Empower unit has been in service for eight years. This year, House of Hope and Team Williams LLC have partnered up to introduce a brand new unit into service. The unit is a customized 20'x8' trailer that includes showers (including one that is handicap accessible), heated floors, an area for case management, area for haircuts, and an enclosed private medical space.

Help us continue this work.

Help us empower change—one shower, one haircut, one conversation at a time.

Your support can restore dignity. It can rebuild trust. It can help change a life.

Thank you for your generosity,  
The Missions Board

[www.peacedalechurch.org/missions](http://www.peacedalechurch.org/missions)

The PDCC Missions Board has chosen to support Shower to Empower with your Mission of the Month donations this month. Donate by 1) placing your gift in the Missions basket during Sunday service, 2) sending a check to the church office @ 261 Columbia Street, Peace Dale, RI 02879, **Checks should be made out to PDCC with "Shower to Empower" in the memo line** or 3) clicking the Give now button here to donate online ([peacedalechurch.org/ways-to-give](http://peacedalechurch.org/ways-to-give)).

**Give now**



Peace Dale Congregational Church is blessed to host the annual **Tunes & Tacos** music and art night on Thursday, June 4th from 5:30 to 8 PM. The enthusiasm, energy and talent of SKHS student musicians and artists is not to be missed. The sacristy literally SINGS & SWINGS! Expect musical performances from Splendid Strings, eSKape and the Jazz Band. Also with an art sale, 50/50 raffle, dinner (w/meat & vegan options) and ice cream sundae bar. All proceeds support fine arts education in the SK schools. \$25 adults; \$10 kids 18 & under; free for 3 & under. It is an uplifting, community experience - not to be missed!



**SK FINE ARTS BOOSTERS PRESENT**

# TUNES & TACOS



**THURSDAY, JUNE 4, 2026**

**5:30 - 8:00PM • PEACE DALE CONGREGATIONAL CHURCH**

A night to celebrate SKHS student musicians and artists. Events include musical performances, student art sale, 50/50 raffle, dinner & ice cream sundae bar. (meat and vegan options)

**\$25: ADULTS**  
**\$10: KIDS 18 & Under**  
**FREE: KIDS 3 & Under**

All proceeds support fine arts education in SK Schools

Scan QR code for tickets or visit:  
[events.humanitix.com/tunes-and-tacos-2026](https://events.humanitix.com/tunes-and-tacos-2026)



**PERFORMANCES:**  
 Splendid Strings  
 eSKape  
 Jazz Band

Wakefield Rotary Club Presents

# Children's Festival

Sunday May 31, 2026  
 11:00AM - 4:00PM

featuring **Greg Lato**  
 AWARD WINNING CHILDREN'S MUSICIAN

- Pony Rides
- Petting Zoo
- Games & Crafts
- Food & Raffles
- Touch-A-Truck
- Bouncy House
- and More!!!

**\$30 Family**      **\$10 Individual**

Scan for more info and tickets.

**South County YMCA**      **Rotary Club of Wakefield**

## Youth Connect Sponsors Children's Book Drive – through 5/24

Our Youth Connect students ask your help collecting children's books for the annual [Books Are Wings](#) /United Way book drive.

**New and gently used books for children — babies to Grade 5 — are welcome.**

No books for adults, reference books, textbooks, workbooks, library books, or mildewed/damaged books.

**Books Are Wings** (Pawtucket, RI) works with students around the state, with a focus on communities where children often do not have their own books at home. Books Are Wings works to engage students in their classrooms, at school functions, community events, and playgrounds.

"We believe that offering books to children in different environments instills a consistent message that reading is not just school work, it's a way of life!"

"Research [shows](#) that access to books is one of the strongest predictors of interest in reading and academic success. Books Are Wings seeks to provide every child with regular access to books."



### 2026 PDCC Youth Calendar

#### May: Jesus Is Always With You

Sunday 3 Youth Connect 10 AM

- Create Flower Bouquets for Moms

Sunday 10 Happy Mother's Day: No Youth Connect

Sunday 17 Youth Connect End-of-the-Year Celebration: Breakfast with Jesus 10 AM

**We invite you to drop off new and gently used books in the box outside the church office through Memorial Day. Our donations will be picked up that week.**



## Social Justice in Action



For THIS WEEK'S list of events and opportunities, check out the [Social Justice Committee info](#) on the Missions or Groups section of our PDCC website. Submitted by Joanne Haynes

## Come Sing or Ring with Us!



Our **singers** welcome you! Rehearsals are Thursday 6pm for Praise Team and 7:30pm for Traditional Choir.

### Our **bell ringers**

welcome you! Teenagers on up in age. Ability to read music is a plus. Practice Tuesdays @ 6:30pm.



Ask a choir member after worship or send an email to [office@peacedalechurch.org](mailto:office@peacedalechurch.org)

## Flower Children Welcome



Would you be interested in helping to ensure there are flowers in the Sanctuary for Sunday Worship services? We field phone calls or email from

PDCC members/friends wanting to commemorate certain dates; we reach out to members and friends who have given flowers before. No physical labor required. **QUESTIONS** contact Lynn McCall 401 742-3949 or Claudia Swain.

## Join PDCC Green Team!



For anyone, of all ages, interested in learning more about the "Green Team", please contact George Faucher at [glfaucher@gmail.com](mailto:glfaucher@gmail.com) and/or Don Hermes at [dhermes33@gmail.com](mailto:dhermes33@gmail.com)



## Once-a-Month Singers

Do you want to express yourself through singing? Please join us for **family service the fourth Sunday of each month.** Enthusiasm encouraged, super singers - not so much, we appreciate everyone. You don't have to read music. We know these tunes. **CONTACT** [jane.stabile@outlook.com](mailto:jane.stabile@outlook.com) for music videos, lyrics and info.

## Congregational Care: Caring for Each Other

**WE NEED YOU!** Congregational care has always been one of the most important missions of Peace Dale Congregational Church and we need you. There are three ways you can enhance this very important part of our church family's mission:

1. **JOIN.** Join the Prayer Circle (meets every Tuesday morning at 9:30 a.m. in the church's community lounge on the third floor) or the Prayer Shawl Group that meets once a month (Carol Edwards is there to teach knitting and crocheting if you want to learn).
2. **DO.** If you can help with any of the following efforts to provide a special sense of support or just a caring thought, please let us know:
  - send cards,
  - make phone calls,
  - deliver flowers or prayer shawl,
  - visit someone.
3. **SHARE.** Let someone on Prayer Circle (listed below) know of anyone you think could use prayers, a prayer shawl, a card, a phone call, or a visit, so we can fulfill a thoughtful caring gesture. Prayers can also be requested in church during Joys and Concerns or using the colorful pew cards; or through the [online form](#) on our website.

**LET US KNOW!** Sometimes we do not hear about folks who could use a special extra touch of caring; please let us know if you need our caring.

Shalom with love, Prayer Circle

Linda Jeans (LTJeans@ verizon.net), Carol Edwards (caedwards760@ gmail.com), Joanne Haynes (joanne@ haynesrandj.com), Betsy Nelson (betsynelson10@ verizon.net), Paula Campbell (phedbat9@gmail.com), Norma Brooks, Darlene Hermes (dhermes44@ gmail.com), Christine Grevstad (christinegrevstad@ hotmail.com), Bea MacGregor (bmacgregor47@ gmail.com), Thomas Mather, Laura Lehrman (lauralehrmankelly@ gmail.com), Claudia Swain, Cindy Fish (cbfish0171@ gmail.com), Enid Watson (watsonenid@ gmail.com), and Pastor Fred (fred.e@ mac.com).

## Gift Cards with a Kick

Stop by the RaiseRight table in Fellowship Hall after service each Sunday and let us help you with your shopping.



**You get a card for the full amount *and* every retailer gives money back to the church for the money you spend.**

Use RaiseRight to buy:

- **gift cards** for teachers, service providers, family, birthdays, and special occasions.
- **cards for your own personal shopping** of groceries, etc.

**IN STOCK CURRENTLY** – Amazon, Applebee's, Dunkin, TJ Maxx/Marshalls, Matunuck Oyster Bar, Old Mountain Lanes, Panera, Starbucks, VISA, and Walmart as well as all the local grocery stores.

**PLANNING TO TRAVEL?** RaiseRight offers Airline gift cards, Gas gift cards, and Hotel gift cards. All of these cards can be *special ordered* ahead of time.

**QUESTIONS?** Contact Deb Shaw or stop by the table on Sunday after worship.

### Peace Dale Congregational Church

261 Columbia Street  
Wakefield RI 02879

p: (401) 789-7313 f: (401) 789-6127  
web: peacedalechurch.org  
facebook.com/PeaceDaleChurch