



Peace Dale
CONGREGATIONAL CHURCH

PDCC E-Light Newsletter

261 Columbia Street
Peace Dale, RI 02879
(401) 789-7313

February 5, 2026

SUNDAY WORSHIP 10:00 AM

Office Hours

Mon, Wed, Thurs 10am-2pm

Contact Us

SENIOR MINISTER:

THE REV. A. FRED EVENSON
FRED.E@MAC.COM

ADMINISTRATIVE ASSISTANT:

MARYLOU McMILLAN
OFFICE@PEACEDALECHURCH.ORG

Birthdays

Ray Bradley
Benjamin Congdon
Elizabeth Congdon
Michael Congdon
Rod Gilbert
Joanne Haynes
Andrew Menard
Hal Thomas
David Twombly

Visit Our Webpage!

peacedalechurch.org

Follow us on Facebook!

Facebook.com/PeaceDaleChurch

Last Week's E-Light

peacedalechurch.org/e-li

You Are Invited!

This is a BIG Sunday :) Come and join in the **potluck** following worship. It's a great opportunity to enjoy some fellowship and food. Whether you bring a dish or not, All are welcome. We will be holding the **Annual Meeting** towards the end of the potluck meal.

And speaking of All being welcome, hopefully you will come to **worship** this Sunday; it will be one for the books! Not only is it a Family Worship Service Sunday and not only will we lift up some folks who are being named **Great Stewards**, and not only will we be hearing about the special mission offering of the month, but we will also be celebrating a **baptism**!

Let's All gather around the tables this Sunday. There is a place for you!
Peace and Joy, Brother Fred



Once-a-Month Singers – 2/8

Rescheduled from 1/25. You know these favorites, so start humming and get into the spirit with Shout to the Lord; Prepare Ye the Way of the Lord (Godspell); Living Water by Anne Wilson; I Will Follow Him made famous by Whoopee Goldberg in Sister Act. You can check them out through your music provider or You Tube. Want to express yourself through singing? Please join us this month during the **family service on Sun. 2/8** for a baptism and 4 special celebratory songs. Enthusiasm encouraged, super singers - not so much, we appreciate everyone. You don't have to read music. We know these tunes.
CONTACT jane.stabile@outlook.com for music videos, lyrics and info.

NO RAISERIGHT SUNDAY – Because of the potluck and Annual Meeting there will be no RaiseRight sales after church Feb. 8. We'll be back on Feb. 15.

Annual Congregational Meeting – February 8

The 169th Annual Meeting of Peace Dale Congregational Church will be Sunday February 8, 2026, following 10 am worship and pot-luck luncheon.

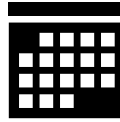
The purpose of the meeting shall be to elect officers, board members and delegates, and vote on a proposal to proceed with a Capital Campaign and hire a consultant.

The Slate of Nominations is available **on the church website** and is posted on doors at PDCC. The Annual Report is available **on the church website** and was emailed to active members of the Congregation. Paper copies will be available at the Annual Meeting or by contacting the church office.



IN THIS ISSUE

Annual Meeting – 2/8
 A Potluck Event – 2/8
 Ash Wednesday Service – 2/18
 Big Soup Party to Benefit Dinner Table – 2/15
 Bring Your Unwanted Greeting Cards
 Church World Service Kits – donate kids supplies
 Come Sing or Ring with Us
 Congregational Care: Caring for Each Other
 Eggstravaganza's Coming – 3/28
 Family Event at SKHS – 2/5-8
 Gift Cards with a Kick
 February Mission: Support Afghan Girls' Education
 Join Green Team
 Knit and Crochet on Thursdays
 Looking for a Blue Recycle Bin for Tabitha
 No RaiseRight Sunday 2/8
 On the Calendar
 Once-a-Month Singers – 2/8
 Painting Class with Susan Sward – 2/28
 Social Justice in Action
 Tabitha's Closet – need mittens/gloves; new work day
 Thank You from Adoption RI
 Volunteer for Tuesday Bistro
 White Elephants
 Worship Flowers



On the Calendar

Sunday Feb. 8 @
 10am Family Service
 with Baptism
 followed by Potluck
 and Annual Meeting
 of the Congregation

Sunday, Feb. 15 @
 10am Contemporary
 Worship

Wednesday, Feb. 18
 @ 6:30pm Ash
 Wednesday service

Mondays @ 6:30pm
 NA Meeting – Learn to Live

Tuesdays @ 9:30am Prayer
 Warriors / Prayer Circle

Tuesdays @ 6:30pm AA
 Meeting

Tuesdays @ 6:30pm Bell
 Choir rehearsals

Thursdays @ 1-3pm Shawl
 Knit & Crochet

Thursdays @ 6pm
 Contemporary Choir reh.

Thursdays @ 7:30pm
 Traditional Choir rehearsal

A Pot Luck Event – 2/8



PDCC Annual Meeting
SUNDAY FEBRUARY 8
AFTER CHURCH SERVICE
IN FELLOWSHIP HALL

Our Annual Meeting is traditionally a potluck brunch
 provided by our members. Please bring
 a dish to share. Finger food is preferred if
 possible. **QUESTIONS?** Contact
 Christine Grevstad (in Breeze)



Knit and Crochet on Thursdays

Our Prayer Shawl makers are meeting together with the I
 Care Shawl Project makers every Thursday from 1-3pm in
 the Community Room. All knitters and
 crocheters welcome! We can help you
 learn, too.



CONTACT Carol Edwards or Marjorie
 Mahoney marjor4029@ yahoo.com

Ash Wednesday Service



Wednesday, February 18 at
6:30 PM in the Sanctuary

We invite you to an evening of
 introspection and
 contemplation. Please join us in

sharing of quiet prayer, music and the
 sacramental ashes to begin our Lenten season.

This experience will begin at 6:30pm and end
 at 7:30pm. Join us for all or a portion of this
 worship opportunity.

The sharing of Ashes is a simple, vivid and
 tangible reminder of our humanness and our
 mortality. Through this tradition may we be
 reminded of God's grace and may it enhance
 our faith.

Worship Flowers



The Sanctuary flowers of February 8 are given to the glory of God. Flowers are a beautiful way to remember a loved one, celebrate a special occasion, or simply give to the glory of God. **If you are interested in donating Sanctuary flowers** for February, please contact Claudia Swain.

Painting Class with Susan Sward – 2/28

This event has been **rescheduled** to February 28. Join PDCC member and artist Susan Sward as we paint the beautiful Eastern Bluebird.



No experience necessary. All materials will be provided.

Bring a light lunch or snack.

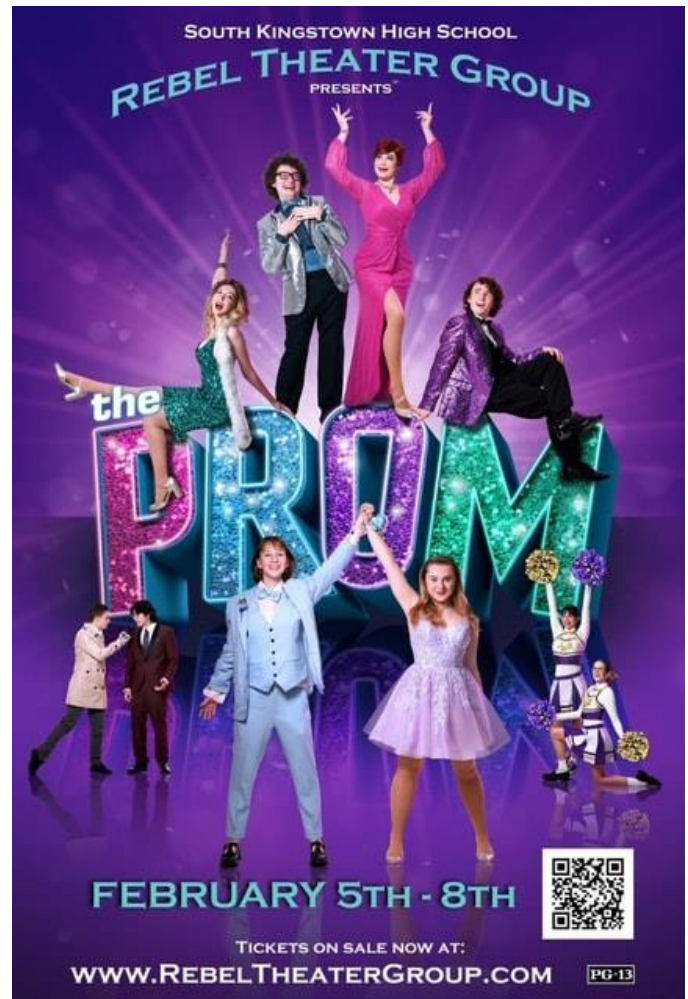
February 28 @ 10:00 am - 1:00 pm
Fellowship Hall
Cost: \$55, please pay in advance
Class Limit: 12

Proceeds to purchase art supplies for Youth Connect.

Signup in Fellowship Hall
or mail check to Susan Sward, 1 Spring Street, Wakefield RI 02879

Family Event @ SKHS – 2/5-8

Thurs. **2/5 to Sun. 2/8** at 6: 30 PM except Sun at 1 PM.
“Lights, camera, action! SKHS Rebel Theater Group is bringing the MAGIC of Broadway to South Kingstown with The Prom — a heartwarming musical about acceptance, kindness, and celebrating what makes each of us unique!” Come experience why the Rebel Theater productions always walk away with numerous top awards for HS musicals in RI. Enjoy talented performers, great costumes, amazing sets with loads of dancing and singing. This is just the sort of pick up we need mid-winter. Attendees are encouraged to really dress up on Sat. night and/or wear rainbow colors for pride night. Students created the clips on this Facebook page. It’s quite possible you’ll know some of them. For more info talk to the Stables. facebook.com/RebelTheaterGroup/



Winter Sanctuary PDCC History – 2/15

Last Sunday, we celebrated PDCC's Foundation Day, which is officially January 30, with cake and a selection of items from our Archive Room.

Next, join us **February 15** for our first historical presentation of 2026, entitled "Winter Sanctuary." See you there!

Submitted by your Church Historian, Stephanie Healy



Eggstravaganza's Coming!

Save the Date!
March 28 @ 11 am – 2 pm

Come Sing or Ring with Us!



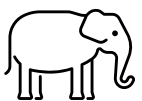
Our **singers** welcome you!
Rehearsals are Thursday 6pm for Praise Team and 7:30pm for Traditional Choir.

Our **bell ringers** welcome you! Teenagers on up in age. Ability to read music is a plus. Practice Tuesdays @ 6:30pm.



Ask a choir member after worship or send an email to office@peacedalechurch.org

White Elephants



Thank you for all you bring. We do want your toys, games, puzzles, electrical items, kitchen stuff, dinnerware, decoratives and tchotchke, pet items, crafts, desk/school items, etc. – but no books, CD's, mirrors, art work or furniture. Nothing large – we don't have a way to store it!

TURN LEFT NOW New collection area is to the left as you reach the bottom of the stairs. We've switched with Tabitha's.

February Mission of the Month: Support for Afghan Girls' Education

We are pleased to share that Peace Dale Congregational Church has selected SAGE (Support for Afghan Girls' Education) as our Mission of the Month.

On Sunday, February 8, we will welcome Anne Sliney, a board member of SAGE, along with Khadija Nazari, the organization's Founder and President, to our worship service. Khadija is an Afghan woman who fled her country after the Taliban takeover and now leads SAGE's courageous work to provide education for girls and young women in Afghanistan—many of whom are currently banned from attending school.

SAGE is a Rhode Island-based nonprofit that operates a secret school in Kabul and supports students with academic instruction, English tutoring, GED preparation, and pathways to higher education. Their work is carried out under extraordinary conditions and with deep commitment to justice, dignity, and hope.

We look forward to hearing directly from Anne and Khadija about SAGE's mission, the girls they serve, and how our church community can support this life-changing work.

Please join us on February 8 as we learn more about SAGE and stand in solidarity with Afghan girls whose right to education is being denied.

More information about SAGE is available at <https://www.sageafghanistan.org/>

Donate by putting your gift in the offering basket during worship, sending a check to the church, or clicking the Donate Now button on this page.

Thank you for your generosity,
The Missions Board
www.peacedalechurch.org/missions

The PDCC Missions Board has chosen to support SAGE with your Mission of the Month donations in February. Donate by 1) placing your gift in the Missions basket during Sunday service, 2) sending a check to the church office @ 261 Columbia Street, Peace Dale, RI 02879,

Checks should be made out to PDCC with "SAGE" in the memo line or 3) clicking the **Give now** button here to donate online (peacedalechurch.org/ways-to-give).

Give now

The January Mission of the Month has collected to date \$901.41 for the Domestic Violence Resource Center.

Benefit for Peace Dale Dinner Table – 2/15



BIG SOUP PARTY

Sunday * February 15, 2026
4:30 - 6:30 PM

Homemade Soups, Bread and Desserts
Donations Accepted

BENEFITS
Peace Dale Dinner Table Weekly Community Dinners
Bring A Friend - All are Welcome

Peace Dale Congregational Church
261 Columbia St, Wakefield RI

www.Peacedalechurch.org
www.facebook.com/PeaceDaleChurch

Calling all PDCC Soup Creators!

What is your favorite soup recipe?? Is it a secret family recipe passed from one generation to the next? Did you find this recipe when you were first on your own and have made it ever since.

Maybe an old friend gave it to you, or you concocted it yourself. It might be a favorite of one of your children or a special person. Then, there is the soup that requires no recipe, only the one in your head! Whatever it is... we would love to feature it at the Third Annual Soup Party to benefit the Peace Dale Dinner Table.

You are the key to the success of this fundraiser. **If you would like to donate a soup**, please email sylviablanda@gmail.com or text 401-439-3541 with your name and the kind of soup. If you have a crockpot, great; if not just deliver it in a soup pot to the church by 4:15pm on February 15th.

We cannot wait to try yours.

Gabby Klensch is recruiting folks to make dessert.

We also will need some able-bodied folks to help set-up after Fellowship on Sunday and for clean up when the event is done.

Mostly we need you all to come, enjoy some soup and have a great time.... See you on the 15th



Big Soup Party Dessert Makers Needed

Sign up to bake – or shop for – a dessert for our Big Soup Party on 2/15/26.

Sign-up by:

- Talking to Gabby at church
- Write on the clipboard in Fellowship Hall
- Call or text 401-932-8350
- Email gklensch1@gmail.com



Thank you so much, Gabby

Volunteer for Bistro Dinner Table on Tuesdays



Bistro sit-down community dinners in Fellowship Hall on Tuesdays at 4:30pm!

At this time, we really have a **need for additional volunteers** for the Bistro. It **does not need to be an every-week commitment**.

The Bistro serves approximately 35 guests at tables, much like a restaurant. We need help to prepare and cook the meal, prepare salads, serve patrons (salad, dinner, dessert, coffee and tea), as well as cleanup and dishwashing. We also have a volunteer to make individual desserts. If you can help out, or are interested, but want more information, please contact Cynthia Cherney (or the Church Office at office@peacedalechurch.org 401 789-7313).

Tabitha's Closet

Open Saturdays 9:30am–12:30pm

At this time, we particularly need:

- Mittens and gloves



Tabitha's Closet, PDCC's clothing ministry, offers new and gently-used clothing for affordable suggested donations. **Get what you need, pay what you can.**

DONATIONS We are taking winter items for men, women, and children, as well as costume jewelry. Please hold on any spring/summer clothing donations given our limited storage space. We ask that clothing donations be laundered and delivered in a clean bag, as we don't have a washer/dryer.

We happily accept current-season clothing: shirts, pants, skirts, dresses, shorts, sweaters, sweatshirts, coats, hats, gloves for children and adults, belts, purses, costume jewelry. We accept shoes that are new or lightly-used. See peacedalechurch.org for a list of what we do and do not accept.

VOLUNTEER!! We would love more volunteers! If you would like to help sort clothes, staff this effort, or do marketing, please contact tabitha@peacedalechurch.org

LATEST UPDATES on Instagram
#shoptabithascloset.

TABITHA SUPPORTS OUR COMMUNITY We serve people every week whose need exceeds their ability to pay and who are happy to gain new-to-them clothing and shoes. We also have shoppers who contribute the full "ticket price" or more for items, knowing that we reinvest the funds in the church and our missions, and to support community partners.

We are reinvesting the money raised to support social services in our community – such as the Pastor's Discretionary Fund, Church World Service Kits, Peace Dale Dinner Table, Gratitude Tree w Jonnycake Center, Tri County Community Action Agency, and Youth LGBTQ Closet (Youth Pride RI).

THURSDAY MORNING VOLUNTEERS?

Interested in volunteering at Tabitha's, but our afternoon time slots don't work with your schedule? Great news! We are looking for volunteers on Thursday mornings from 9-11 am. If we can recruit enough interest, we will establish it as another weekly session. First session is February 19th. If you're interested or have questions, please contact Lynne at tabitha@peacedalechurch.org

NEED MITTENS/GLOVES DONATIONS

With low temperatures continuing, we are seeing customers come into Tabitha's looking for warm mittens and gloves- for children and adults and we have none to offer! If you have any you are thinking of donation, now would be a great time! And to the knitters in our midst, handmade would be most welcome too!!!

We ♥ our community event!



FEBRUARY 7
ONLY

2 FOR 1

ON ALL

RED & PINK

CLOTHING

GET WHAT YOU NEED, PAY WHAT YOU CAN!

SHOP FOR THE WHOLE FAMILY!

Open Saturdays 9:30am- 12:30pm

Monthly Third Tuesdays 4-7pm



Office Door from Parking Lot, downstairs
Peace Dale Congregational Church
261 Columbia St. Peace Dale RI 02879
tabitha@peacedalechurch.org

Thank You from Adoption RI

On behalf of our children and teens, welcome to the Adoption Rhode Island family and thank you for your generous Board of Missions special offering gift. There is so much good that comes from your gift. We could not do our work on behalf of the most vulnerable children, teens, and families without you.



Thank you for being by our side to put children first, always. For changing a life. For caring.

Sincerely,

Darlene Allen
CEO and Executive Director

Looking for a Blue Bin

We would happily accept donation of a blue recycling bin to be used for Tabitha's Closet that looks like this photo – for cardboard. Thank you.



Social Justice in Action



For THIS WEEK'S list of events and opportunities, check out the [Social Justice Committee info](#) on the Missions or Groups section of our PDCC website. Submitted by Joanne Haynes

Join PDCC Green Team!

For anyone, of all ages, interested in learning more about the "Green Team", please

contact George Faucher at glfaucher@gmail.com and/or Don Hermes at dhermes33@gmail.com



Donate Supplies for Church World Service KIDS Kits

→There are some changes to the supply list.

Please help us collect supplies! We have enough Hygiene Kits but continue to collect for the Kids' Kits.



There is a collection box on the stage in Fellowship Hall.

With the help of our congregation, Women's Fellowship has continued to increase the number of kits we make each year. Kits are sent to areas where natural disasters have occurred. Please add these items to your shopping lists and leave them in boxes provided in Fellowship Hall. We have found these items in Job Lot, Wal-Mart and Dollar Tree.

Thank you for helping to make another successful year supporting this world-wide mission. UPDATED supplies list:

KIDS KIT

- Glue stick (new item)
- Box of 12 colored pencils (new item)
- 2-pocket folder (new item)
- Rounded tip scissors
- 70-count spiral bound notebooks
- 12 inch ruler
- Hand-held pencil sharpener
- Large eraser
- Unsharpened pencils
- 24 pack crayons



We also need handmade cotton bags w/cloth handles for School Kits. Sally Bradley has the pattern.

Submitted by Judy Healy

Congregational Care: Caring for Each Other

WE NEED YOU! Congregational care has always been one of the most important missions of Peace Dale Congregational Church and we need you. There are three ways you can enhance this very important part of our church family's mission:

1. **JOIN.** Join the Prayer Circle (meets every Tuesday morning at 9:30 a.m. in the church's community lounge on the third floor) or the Prayer Shawl Group that meets once a month (Carol Edwards is there to teach knitting and crocheting if you want to learn).
2. **DO.** If you can help with any of the following efforts to provide a special sense of support or just a caring thought, please let us know:
 - send cards,
 - make phone calls,
 - deliver flowers or prayer shawl,
 - visit someone.
3. **SHARE.** Let someone on Prayer Circle (listed below) know of anyone you think could use prayers, a prayer shawl, a card, a phone call, or a visit, so we can fulfill a thoughtful caring gesture. Prayers can also be requested in church during Joys and Concerns or using the colorful pew cards; or through the [online form](#) on our website.

LET US KNOW! Sometimes we do not hear about folks who could use a special extra touch of caring; please let us know if you need our caring.

Shalom with love, Prayer Circle

Linda Jeans (LTJeans@ verizon.net), Carol Edwards (caedwards760@ gmail.com), Joanne Haynes (joanne@ haynesrandj.com), Betsy Nelson (betsynelson10@ verizon.net), Paula Campbell (phedbat9@gmail.com), Norma Brooks, Darlene Hermes (dhermes44@ gmail.com), Christine Grevstad (christinegrevstad@ hotmail.com), Bea MacGregor (bmacgregor47@ gmail.com), Thomas Mather, Laura Lehrman (lauralehrmankelly@ gmail.com), Claudia Swain, Cindy Fish (cbfish0171@ gmail.com), Enid Watson (watsonenid@ gmail.com), and Pastor Fred (fred.e@ mac.com).

Gift Cards with a Kick

Stop by the RaiseRight table in Fellowship Hall after service each Sunday and let us help you with your shopping.



You get a card for the full amount *and* every retailer gives money back to the church for the money you spend.

Use RaiseRight to buy:

- **gift cards** for teachers, service providers, family, birthdays, and special occasions.
- **cards for your own personal shopping** of groceries, etc.

IN STOCK CURRENTLY – Amazon, Applebee's, Dunkin, TJ Maxx/Marshalls, Matunuck Oyster Bar, Old Mountain Lanes, Panera, Starbucks, VISA, and Walmart as well as all the local grocery stores.

PLANNING TO TRAVEL? RaiseRight offers Airline gift cards, Gas gift cards, and Hotel gift cards. All of these cards can be *special ordered* ahead of time.

QUESTIONS? Contact Deb Shaw or stop by the table on Sunday after worship.

Because of the potluck and Annual Meeting there will be no RaiseRight sales after church Feb. 8. We'll be back on Feb. 15th.

Peace Dale Congregational Church

261 Columbia Street
Wakefield RI 02879

p: (401) 789-7313 f: (401) 789-6127
web: peacedalechurch.org
facebook.com/PeaceDaleChurch